



N I R L A B

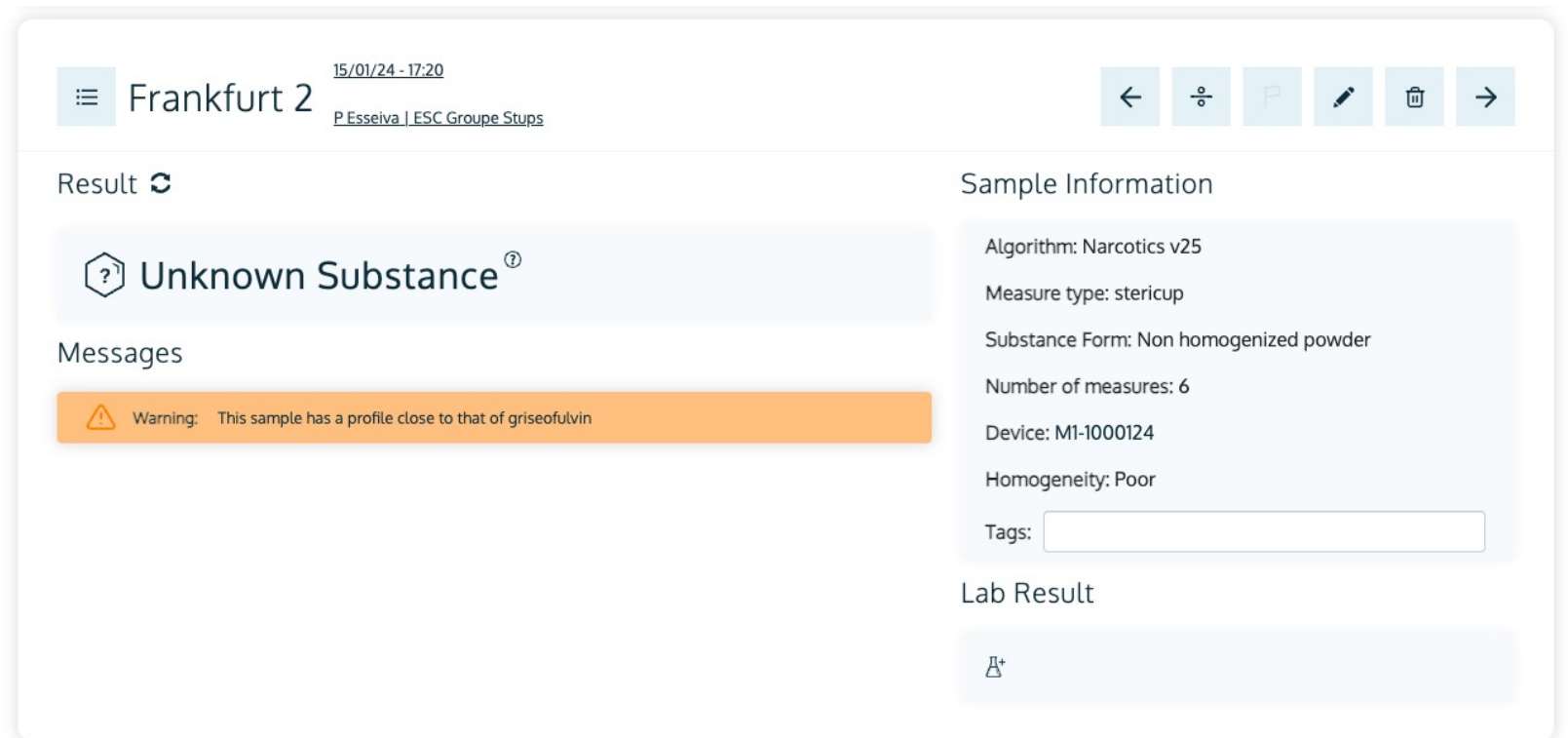
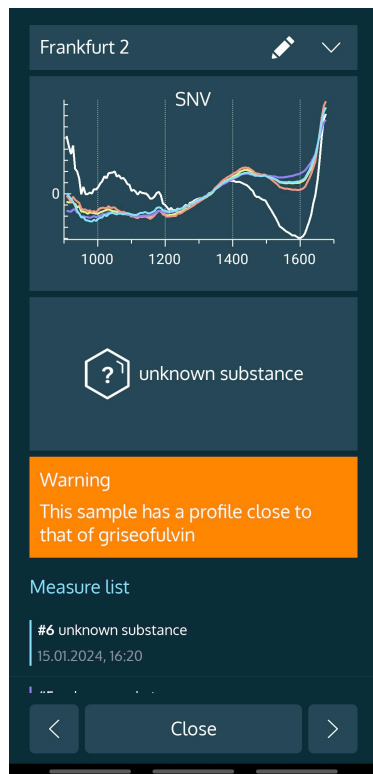
MANUAL GUIDE

How to manage unknown substances?

A smartphone and Web Application designed to Easily Manage your new substances

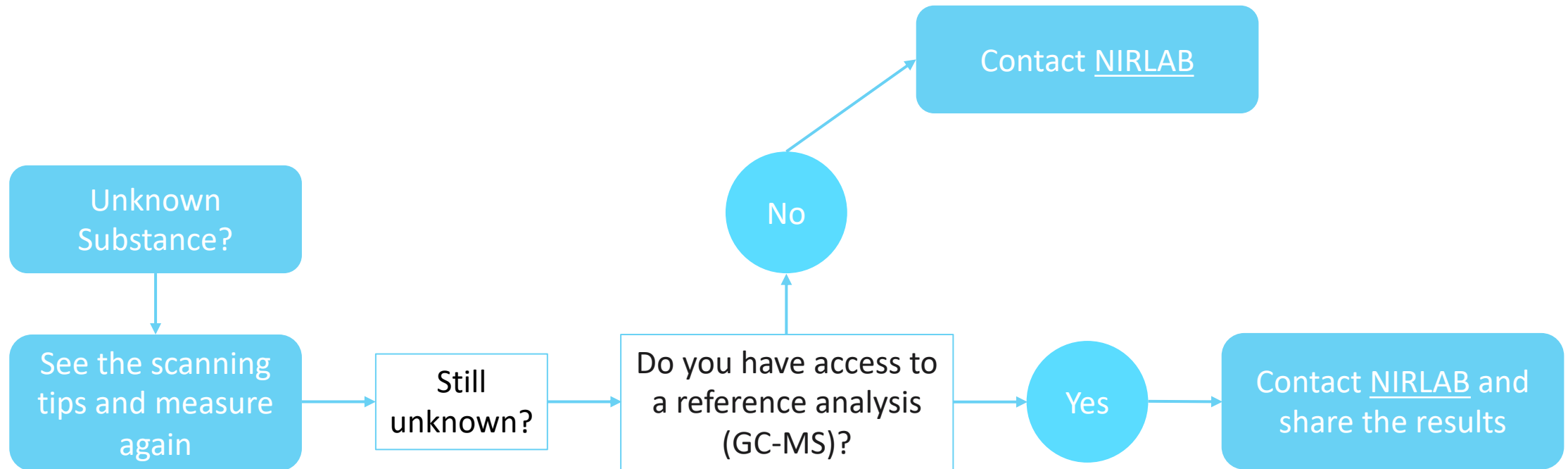
GETTING STARTED

Scanning unknown substances, what to do?



DECISION TREE

Scanning unknown substances, what to do?





Step 1 Scanning tips

RECOMMENDATION

Scanning Tips

- + **All substances can be measured in direct contact or through thin and transparent plastic.** Direct contact produces the best accuracy, especially for quantification.
- + **The sapphire glass should be cleaned** before each scan. This can easily be done by a disposable isopropyl alcohol wipe.
- + **To better assess homogeneity,** *Sample Scans* mode is recommended for powders and high quantity samples.
- + **Small samples** should be measured in an aluminum cup which has a neutral effect on the spectrum.

RECOMMENDATION

Scanning Tips

- + **In the rare case the results show "unknown substance"** try to take several measurements from different sides of the sample.
- + **Point device downwards** when scanning. It is NOT recommended to measure with the device pointing upwards.
- + **Scan substances without altering them.** Preserve original state for accuracy. Eg. XTC pills."
- + **For optimal results,** employ a small aluminum cup for your samples. Furthermore, during the measurement process, ensure either direct contact with the testing device or maintain a minimal 1-2 millimeter distance for accurate and reliable scans.